

# The Lady Slipper Newsletter

January 2018



## PRESIDENT'S PLATE

*by Deb Warwick*

I hope you have all enjoyed a blessed Christmas and a wonderful time of welcoming the New Year. I have to mention the excellent Guild Christmas party. So many people worked together to make it such a terrific event. First, thank you Diane Chase for being willing to head it up, organize it, and make the reservations. Thank you, Val Naber for your work on the centerpieces. They were so festive. Thank you, Ardy Bernier, for the work of getting things for the silent auction and door prizes in addition to helping and advising Diane. Thank you, Joan Hudson, for welcoming people and managing their food choices for the servers. Thank you, Barbie Braman, for the fun bingo game and Sandy Jarosh for the delicious caramels! We did miss our friends who weren't able to be there and hope you had a blessed Christmas and will be able to be with us again in March.

I must admit, with all the activities surrounding Christmas I haven't painted in close to two weeks. Later today one of my nieces is coming over to paint on a teacup so perhaps I'll get back at it. We all need to be thinking about ideas to paint in the coming year. Remember our Founders Day Event and the competition involved with that. When I think about all the amazing pieces I've seen there over the years it helps to get my creative juices flowing! Please note that our schedule for the Founders Day Event is different this year. We were unable to get the rooms needed for the Event in May so we moved it to June 1st. Therefore, we won't see each other in May, but will be together twice in June. Our regular June meeting will be on the 22<sup>nd</sup>.

Another thing to keep in mind is the WOCP Show in Dubuque, Iowa. The dates are April 26-28. There will be several competitions there! Oh, and another note about a schedule change: the April meeting would normally have been on the 27<sup>th</sup> but we changed that to the 20<sup>th</sup> this year to encourage everyone to go to the Dubuque show. And of course there are the Scott County Fair and the Minnesota State Fair. We need to keep those display cases full. I'm so encouraged by how you have risen to the occasion these last two years in bringing your entries.

And one last challenge will be our Guild People's Choice challenge, where the theme will be bugs; with or without wings! It will be fun painting them during these cold months while thinking of the type of weather which brings the bugs back.

I don't know about you, but during this time of year I tend to be in my home more than when the weather is nice or in the time leading up to Christmas and the New Year. We can use this homebound time to paint more. Painting is usually very encouraging to me! Of course we all have those projects which do delight to vex us! Sometimes even smashing something in the garbage container can be freeing! It's sort of like exacting vengeance on a rebellious piece! Try to recreate it with the new knowledge you gained by your mistakes! I'm a big fan of Sir Winston Churchill. I apply his determination to my painting: Never Give Up! And usually those pieces turn out to be some of the nicest things I've done. May you all have an enjoyable winter and receive much inspiration for painting.

# PAT MEYER LOVES TO PAINT – AND LOVES TO LEARN

I was born in Portage, Wisconsin. I lived there until I was 17, at which time my Dad's job took us to Hastings, Minnesota. The thing to do back then was get your friends together and cruise up and down Vermillion Street. Which is what we were doing when this car of cute guys pulled up beside us and of course, we had to drag race from the red light. That 55 Chev left a blue cloud of smoke behind us and it must have impressed one of those cute guys, because Chuck and I were married two years later. We have now been married 57 years, have three girls and one boy, eight grandchildren, and one great-grandchild.

My first jobs at 13 were helping to clean a motel, then at our local hospital in the dietary kitchen, bussing trays and doing dishes. After moving to Hastings, I worked in the hospital kitchen after school. After graduation, I worked for the dairy promotion industry, in the office that sponsored Princess Kay. I left there to work at 3M until I was married. After a year in Fort Lewis, Washington, I went to work for UW-RF. After having three children, the cost of day care matched what I was making so I stayed home and babysat two other children. I started helping my father-in-law with his income tax business. When he got cancer, he told me to keep the business going, so I guess you could say I inherited it. I still enjoy helping people with their income tax returns. When people ask me when I intend to retire, I tell them that I retire each year at the end of April. I don't feel that I have painted the number of years that I have, because each year I must put down the brush from January to May. I don't think I inherited a gift for painting – just a desire and lots of practice. I did have a great-aunt who did some china painting.

My first experience with porcelain painting came from a ceramic show at the St. Paul Armory. I saw violets painted on a lovely coffee pot (perhaps painted by Thelma Granquist). I loved it but could not afford the \$35.00 to buy it. I did buy a daisy plate that I knew I could paint. I found out that Harriet Jensen in River Falls did porcelain painting and gave lessons. So, in 1975, having no previous art lessons, I began

painting, and in 1977 joined the Minnesota Porcelain Art Guild (MPAG). Harriet always encouraged us to take seminars with other artists. When Harriet quit teaching, I started taking lessons from Midge Weinzettel and continued with her till she passed away. After that I started with Frank Albrecht and still go to him today. I have always enjoyed craft-work, pine cone and fall pine arrangements, and for 15 years I was involved with painting 50-75 pumpkins for our church Fall Festival. Portraits of people and animals are my favorite subjects; Dresden, scenes, and flowers, too. Flowers are my hardest because I get them too structured and not free flowing.

The first porcelain show I attended was the 1986 IPAT Show in Kansas City; second, the IPAT show in Minneapolis; then the Nebraska WOCP Show. After that, MNWOCP shows in Blue Earth and IPAT in San Francisco. I love to see everyone's work at shows. All the shows were fun, spending time with friends made the most memories.

I was very fortunate to take many great seminars. I won a scholarship from MPAG to go to Vicki Geretschlaeger. I ended up taking three seminars from her over the years: a pheasant, a horse, and a cougar. I also did her duck studies on my own. I took roses from Glorianne Michels, Jerry Simertz, Mary Ellen Haggerty, Thelma Granquist and Patty Ringer. I've done Dresden with Leta Clemons, Rookwood with Janann Rasmusen, a doll with Jean Muleback, portrait with Mariella, violets with Ann Zitterkopf, scenes with Jane Wright, and lusters with Nancy Bergman. I have also attended all but one of our MPAG Schools. I have taken four seminars with San Do over the years, and one real acid etching seminar with Bill.

Guess that is about all of my history with the exception of the MPAG offices I have held:

President 1995-1997 and 2013-2017

Treasurer 1997-2000 and 2011-2013

Recording Secretary 1983-1985 and 2001-2006

Ed Committee 1986-1992 Chairperson from 1989-1992



# MPAG HOLIDAY PARTY 2017



Our December Holiday Party was a hit! A special thanks goes out to all those who helped: Diane Chase for planning, Ardy Bernier for hauling all the china prizes, Val Naber for the centerpieces, Barbie Braman for the fun games of Bingo, and especially Sandy Jarosh for making all the caramel table favors (Yes, she made the candy!).

Our theme was "Wearable Porcelain." The beautiful handpainted jewelry worn to the party was amazing! Many thanks to all who participated.



*People: Joan Frandle and Joyce Basham (above); Dolores Garbarini and Nancy Bergman (bottom left); Sharon Lindbloom and Kim Harms (below)*





# TIPS AND TRICKS

## **PEN TIPS or “nibs”:**

There are as many opinions about what pen tip to use as there are pen tips. Readily available nibs such as Hunt 102/ 104 or Esterbrook 556 work well for beginners. They are firmer and more forgiving than finer nibs like the Zebra 2586 or the English Fonardt 800 nibs. Choose a nib that fits the size of line your subject requires. Perhaps use different size nibs within the same painting and perhaps different colors of paint, not just black and white. Nibs can also be used to apply luster and various resists.

Care for these tips is important, so protect your tips by sticking them into a piece of foam punched with a pencil, or putting them in a tube when not in use.

The medium you use is your preference. Experiment to find the one that works best for you. The principle of the tip is that the liquid will flow through the split of the tip onto the porcelain. So, it is important that the split itself is clean. Mediums containing turpentine tend to gum up the split if not kept clean with denatured alcohol. Remember evaporated turp is fat oil. Water based mediums make it easier to keep the tip clean with just soap and water. If using a water based medium, remember to wash the tip thoroughly before starting. Tips have oil on them to keep them nice for shipment.

The paint has to be thick enough to hold a line on the porcelain yet thin enough to flow. Experiment and you will find what works for you and the nib you've chosen.

Loading the nib can be done by dipping, or scooping onto the top or bottom of the nib. Each artist has a preference. I like to use a concave dish and dip so I don't accidentally get a glob on my piece. But if you are using a flat tile to hold your paint, it is difficult to dip. You will have to instead scoop a SMALL amount of paint.

If you feel an edge on your nib when you run your finger over the top, it can be re-sharpened once or twice by using a honing stone. Be gentle!

## **DUST: The enemy of us all.**

Dust can ruin a painting so what can we do to minimize the dust in our painting space?

- Be sure not to wear clothing that sheds.
- Choose paper towels and tissues that have the least fuzz. When you rip them off, do it under the table not over your work area. I use old cotton sheeting with a piece of blue shop towels folded in between to absorb oil and turp. I use the cheapest tissues I can buy.
- Never sand your fired piece over your work area. Sanding will send fine dust into the air.
- Make sure you keep your furnace and air filters clean.
- Dust and vacuum your room regularly. A central vacuum system or a water vacuum work best.
- Vacuum your kiln regularly. Kiln maintenance is important. If you haven't fired your kiln for a while, you should preheat it before firing. This will burn the dust off the elements. Also, leave a space between the bottom of the kiln and the first shelf for better heat circulation.

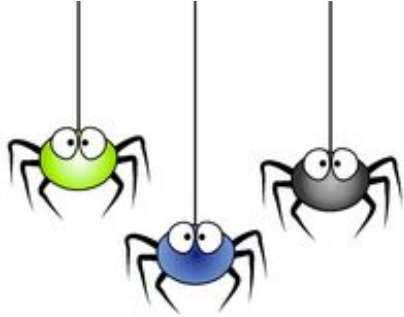
**HINT:** Keep a wee small piece of cotton with some lavender oil on it near your palette. Lavender is a dust retardant; the lint will go to the lavender oil instead of your paint and piece.

**HINT:** Did you know that storing a copaiba based medium in a plastic bottle causes the copaiba to deteriorate. Always store in a glass container.

### **Looking Ahead...**

If you look at our meeting schedule on page 6 of this Lady Slipper, you will see that we are in need of demo leaders (paid \$35 plus lunch) and paint along leaders (paid \$85 plus lunch) to step up. Please contact Val Naber if you would like to share your talents: Naber1968@chiardun.net or 715-658-1968.

The MPAG Board is open to new meeting ideas, so if you have any ideas please let a board member know. Board members are: Deb Warwick, Val Naber, Sharon Lindbloom, Ardy Bernier, Becky Thompson, and Diane Chase.



# THIS & THAT



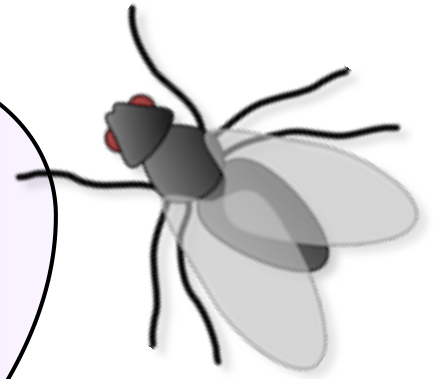
## Dues

Don't forget, dues are due in June of each year. If you have not yet paid for 2017-18, please send \$25.00 to Becky Thompson, 5491 Cottage Ave., White Bear Lake, MN 55110. *If yearly dues are not paid by October 1, your info will not be included in that year's updated roster.*

## - Sunshine Committee -

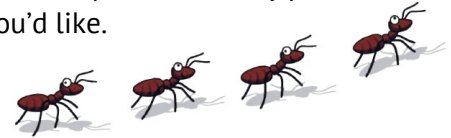
Dolores Garbarini is our Sunshine Lady—how appropriate, as she always has a smile on her face.

If you have family news you'd like to share, Dolores can be contacted, preferably at **651-485-2199**. Dolores' email is [doloresgarb@gmail.com](mailto:doloresgarb@gmail.com), but this is not checked regularly.



## Challenge Piece

The spring challenge for our June 1, 2018 Event is to paint something with a bug, with or without wings. Your choice of style and techniques and on any piece of porcelain you'd like.



---

## Some Things To Do:

### **Campana's Porcelain Art School February 3-8, 2018**

Amarillo Inn & Suites, Amarillo, Texas  
Contact: Nancy 806-663-0196  
[campanaart@cableone.net](mailto:campanaart@cableone.net) [www.companaart.com](http://www.companaart.com)

### **"The Secret Garden" March 21-24, 2018**

OKLAHOMA, MISSOURI, ARKANSAS  
Embassy Suites by Hilton, Norman, Oklahoma  
President: Beverly Armstrong, [wocpbev@gmail.com](mailto:wocpbev@gmail.com)  
Show Chairman: Kay Kernan, [kay\\_kernan@yahoo.com](mailto:kay_kernan@yahoo.com)

### **"Inspire! Dream! Create!" April 26-28, 2018**

**Upper Midwest Regional Porcelain Art Show**  
IOWA, ILLINOIS, MINNESOTA,  
NORTH DAKOTA, WISCONSIN  
Grand River Center, Dubuque, Iowa  
President: Mary Ann Hoerstmann  
608-748-4595 [mahoerstmann@aol.com](mailto:mahoerstmann@aol.com)

### **WOCF Art Institute June 24-28, 2018**

WOCF Museum, Oklahoma City, Oklahoma  
[www.wocf.org](http://www.wocf.org) or [wocfporg@sbcglobal.net](mailto:wocfporg@sbcglobal.net)

### **IPAT-The Mega Atlantic Porcelain Convention & Exhibition August 13-18, 2018**

Miami, Florida.  
[www.ipatinc.com](http://www.ipatinc.com)

### **Porcelain Art School of Indiana September 9-14, 2018**

Contact: Ellen Wilson-Pruitt 317-341-4667  
email: [porcelainschool@gmail.com](mailto:porcelainschool@gmail.com)  
website: [www.porcelainartschool.com](http://www.porcelainartschool.com)

### **Midwest Porcelain Art School October 29-November 3, 2018**

Excelsior Springs, Missouri  
Contact: Peggy Adams 816-583-2376  
Betty Bell 816-296-7314  
Phyllis McElhinney 816-896-1131  
[www.MWPAS.org](http://www.MWPAS.org)

# UPCOMING GUILD MEETINGS

<b>March 23</b>	First Meeting of the New Year!
<b>April 20</b>	<b><i>Note Schedule Change</i></b>
<b>June 1</b>	Founders Day Luncheon, Competition, and Challenge
<b>June 22</b>	
<b>July 27</b>	
<b>August 24</b>	
<b>September 21</b>	<b><i>Note Schedule Change</i></b> • Members' Sale
<b>October 26</b>	
<b>November 16</b>	<b><i>Note Schedule Change</i></b>
<b>December</b>	Holiday Party

Regular Guild meetings are held at 9:30 am at Midland Hills Country Club, 2001 Fulham Street in Roseville, MN.  
Reservations: **BARBIE BRAMAN** at **952-240-6227** or **barbiedoll6kids@gmail.com**

**Please gift the Guild with your talent!**

*Teach! Encourage! Show! Demo and paint-along artists needed. See page 4 for details!*



The Lady Slipper Newsletter  
Minnesota Porcelain Art Guild  
N12011 County Road SS  
Wheeler, WI 54722